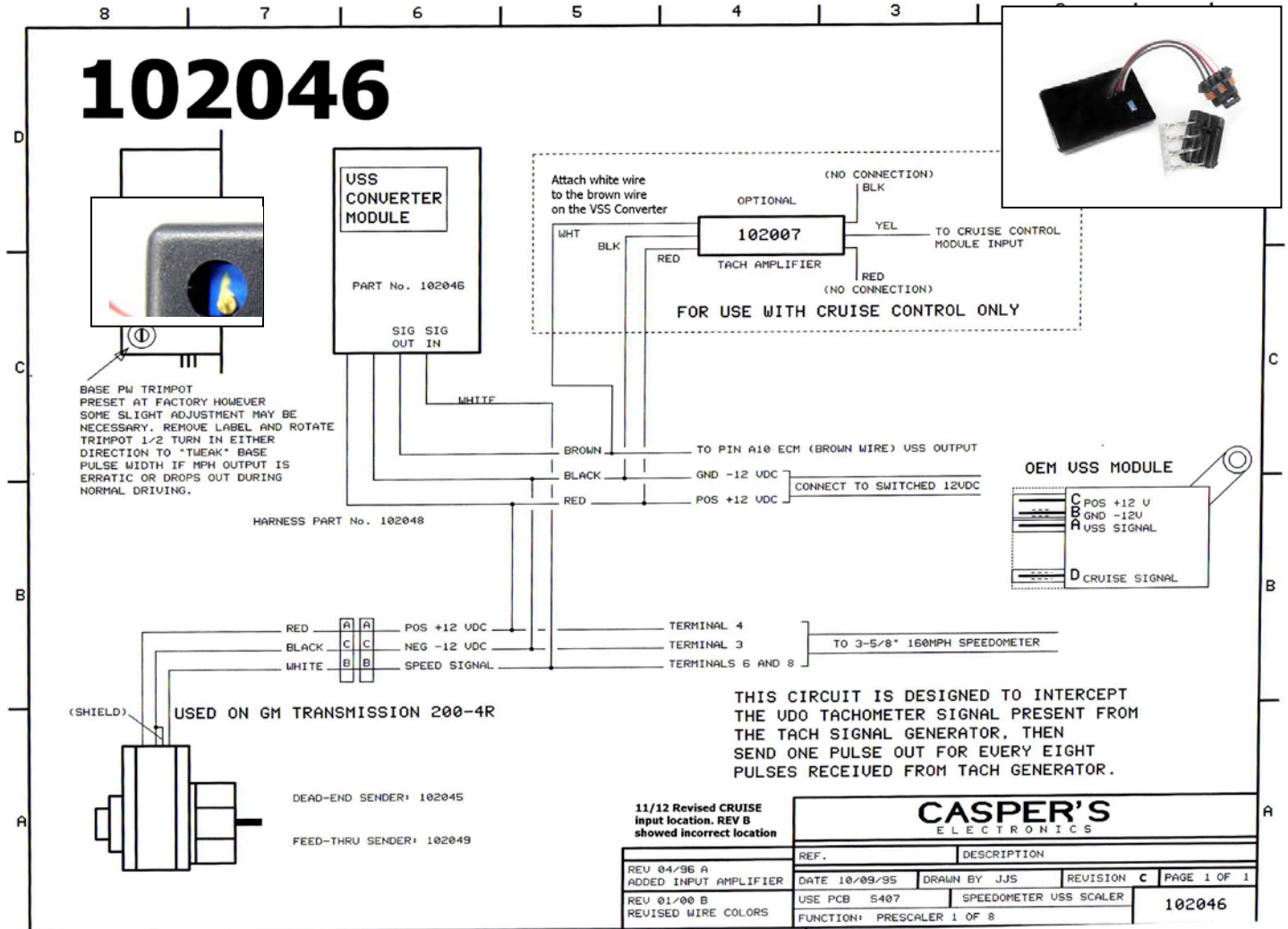


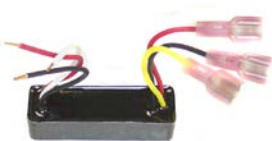
INSTALLATION INSTRUCTIONS

102046 VSS CONVERTER MODULE

This module is designed to convert a 16-pulse Hall Effect speedometer transducer pulse train to the standard ECM in the form of a 2-pulse train, required by the turbo Regal ECM system. Unit is shipped with a four way connector and mating connector which must be wired into your vehicle's wiring using the diagram below. If you wish to add cruise control, an optional 102007 Tach Amplifier module must be used and wired per illustration below. Unit is pre-set at factory for pulse width, but can be slightly modified if needed, via trimpot adjustment. Do not move the trimpot screw more than 3/4 turn in either direction if adjustment is necessary. **NOTE: incorrect wiring can result in permanent damage to the module and transducer.**



Related items used when converting your VSS Signal



102007 Signal Amplifier Module 102045 Dead End Sender 16 Pulse 102049 Feed-Thru Sender 16 Pulse 107147 Replacement Drive Shaft 0.102"