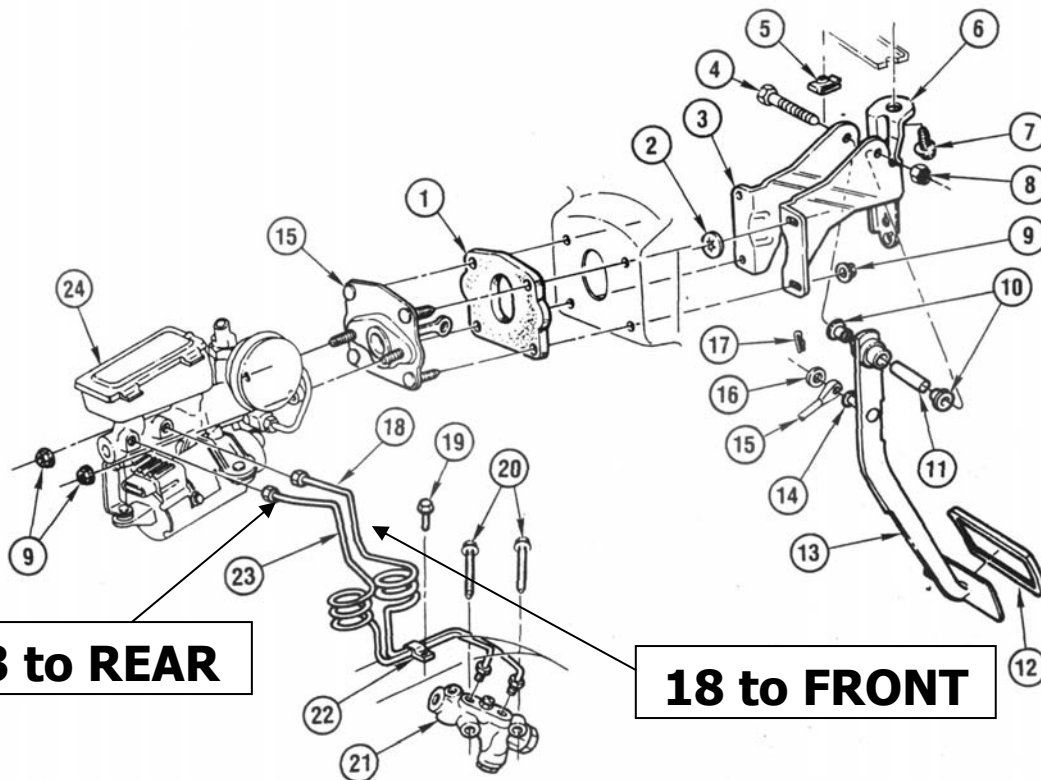


# Powermaster (GM) Brake System



4G04-005

## 1986-87 "G" BRAKE PEDAL & POWERMASTER MOUNTING

1.	4.910	GASKET, Pwr Boos Adap To Dash	25522737
2.	8.921	RETAINER, Push On (Type B)(M10x1.5) Zor	11501849
3.	N.S.	PEDAL ASM, Brk (Component Parts Serviced)	
4.	4.634	BOLT, Brk Ped Piv (7/16x14x2 1/2) Phos (8.900)	9423557
5.	4.634	NUT, Brk Ped Brkt (M8x1.25x0.8)(8.921)	11503317
6.	4.634	BRACKET, Brk Ped	25500437
7.	8.900	BOLT, Hex (M8-1.25x32) Full Thd Zc Grd 7	94002122
8.	4.634	NUT, Brk Ped Piv (8.917)	9422299
9.	4.634	NUT, Brk Ped Brkt (8.917)	11502812
10.	4.626	BUSHING, Brk Ped (0.831)	15594358
11.	4.626	SPACER, Steel Tubing 7/16" (Cut to Required Length)	529323
12.	4.630	COVER, Brk Ped	1256203
13.	4.625	PEDAL, Brk	25511679
14.	4.662	WASHER, Brk Ped Push Rod To Ret Pin	1368917
15.	4.658	PUSHROD, W/Retainer, Powermaster	18011544
16.	8.928	WASHER .780 O.D.-.580 I.D.	1193696
17.	8.934	RETAINER, Type B Spring,Stl,1.12 Tl.,2 Shank,61M Peor	10040797
18.	4.685	PIPE, Frt Brk Comb Vlv	25519995
19.	8.977	SCREW, HWH Tap (M7.9-2.12x20) Pc	11500086
20.	8.977	SCREW, HWH Tap (M8x1.25x50) Lobular Thrd Cad	11504955
21.	4.690	VALVE, Brk Comb	25509419
22.	8.950	CLIP, Cisd W/Loc Tang/Yelo/Stl/.250X.340	478601
23.	4.685	PIPE, Rr Brk Comb Vlv	25519996
24.	4.650	CYLINDER, Brk Mas (Powermaster Boost)	18013685

This is a page out of the GM manual describing the Powermaster system. As you can see, the cylinder port closest to the firewall is for the FRONT brakes, and the other, larger port is for the rear brakes. You should put a proportioning valve off of the larger port to the rear brakes, to set the balance properly. I have used this system with my Corvette-equipped Cobra using disk brakes all around, with very good balance and braking. I used an in-line adjustable proportioning valve from Summit Racing. -John Spina, Casper's Electronics <http://www.casperselectronics.com>